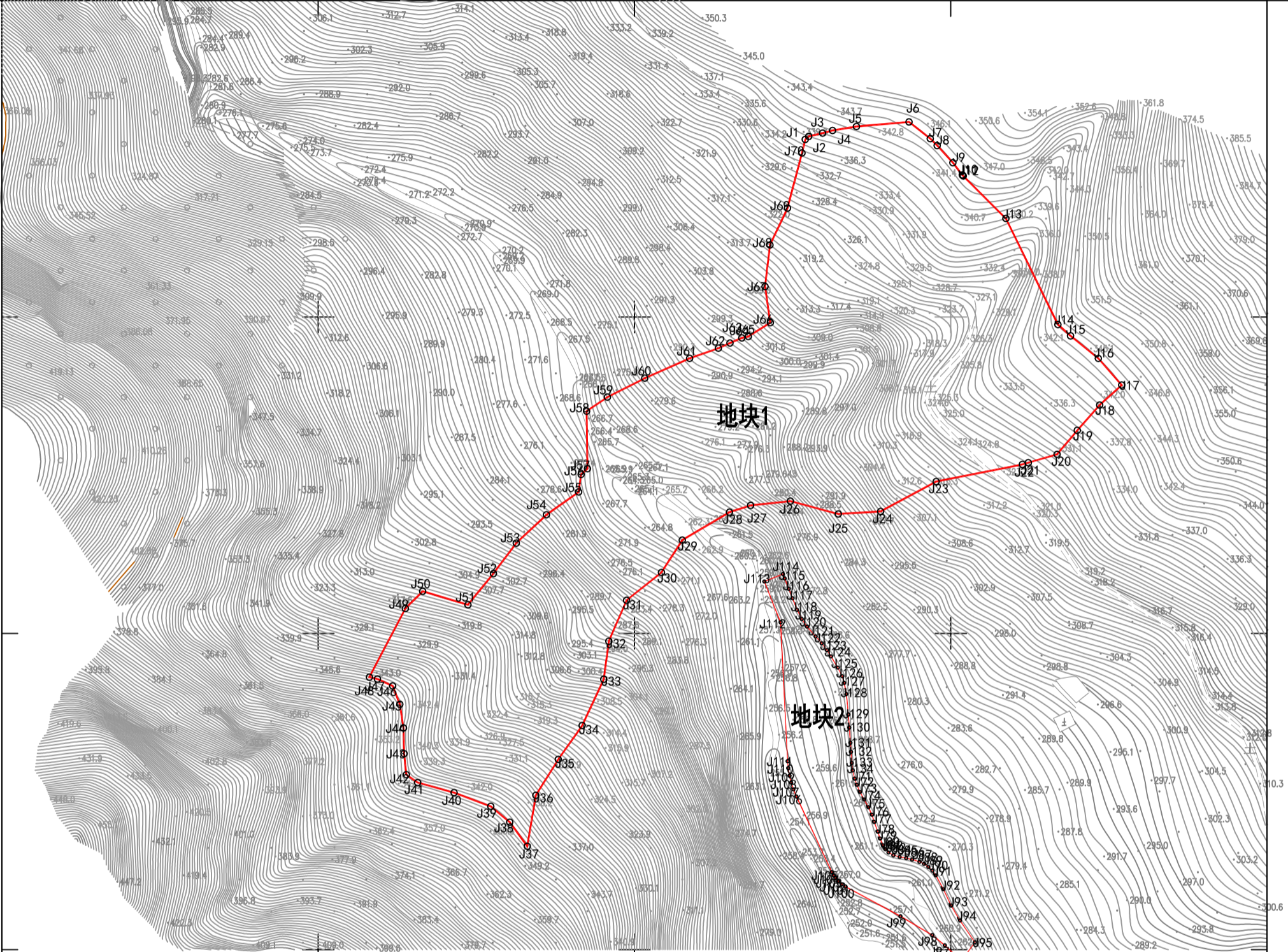


## 尤溪县桂坑水库坝区用地勘测定界图 2882.9-39606.8

39606.8 39607.2  
2883.4 2883.4



地块1界址点坐标表				地块1界址点坐标表				地块1界址点坐标表				地块1界址点坐标表			
点号	X	Y	距离	点号	X	Y	距离	点号	X	Y	距离	点号	X	Y	距离
J1	2883356.1221	9607054.0018	1.45												
J2	2883357.0635	9607055.1026	4.49												
J3	2883358.0860	9607059.4749	3.25												
J4	2883358.9138	9607062.6225	7.68												
J5	2883360.1969	9607070.1969	16.65												
J6	2883361.6370	9607086.7857	8.58												
J7	2883358.3485	9607093.5377	3.05												
J8	2883354.1902	9607095.6877	7.36												
J9	2883348.7581	9607100.6566	4.89												
J10	2883344.8860	9607103.6379	0.25												
J11	2883344.7248	9607103.8228	0.23												
J12	2883344.5434	9607103.9650	19.02												
J13	2883331.1249	9607117.4415	37.36												
J14	2883297.5869	9607133.8958	5.35												
J15	2883294.0288	9607137.8972	11.31												
J16	2883286.8847	9607146.6699	11.19												
J17	2883278.4767	9607154.0506	9.41												
J18	2883272.1658	9607147.0648	10.71												
J19	2883264.1290	9607139.9781	9.87												
J20	2883256.5769	9607133.6164	9.49												
J21	2883253.9353	9607124.5012	1.91												
J22	2883253.4037	9607122.6666	27.83												
J23	2883247.9696	9607095.3874	19.93												
J24	2883238.5274	9607077.8147	13.38												
J25	2883237.7066	9607064.4584	15.69												
J26	2883241.7919	9607049.3081	12.65												
J27	2883240.4415	9607036.7307	7.03												
J28	2883238.2842	9607030.0354	17.33												
J29	2883229.4510	9607015.1211	12.16												
J30	2883219.2405	9607008.5281	14.10												
J31	2883210.4424	9606997.5041	14.11												
J32	2883197.5032	9606991.8820	12.11												
J33	2883185.4933	9606990.3141	16.15												
J34	2883170.8883	9606983.4751	13.10												
J35	2883160.1538	9606975.9146	13.38												
J36	2883148.8123	9606968.8222	16.33												
J37	2883132.7072	9606966.1097	9.40												
J38	2883140.3150	9606960.5910	7.83												
J39	2883145.3151	9606954.5647	12.36												
J40	2883149.6471	9606942.9896	11.96												
J41	2883152.8301	9606931.4566	4.34												
J42	2883155.3242	9606927.8990	6.89												
J43	2883161.8723	9606927.1492	8.10												
J44	2883170.0728	9606926.9608	7.58												
J45	2883177.5723	9606925.8468	6.24												
J46	2883183.3767	9606923.5585	5.29												
J47	2883185.5793	9606918.7501	2.82												
J48	2883186.1357	9606916.1911	24.52												
J49	2883207.8504	9606927.5716	7.71												
J50	2883213.2791	9606933.0441	14.95												
J51	2883209.0065	9606947.3673	12.77												
J52	2883218.9163	9606955.4271	12.01												
J53	2883228.5239	9606962.6347	13.10												
J54	2883237.4919	9606972.1838	12.46												
J55	2883244.6803	9606982.3827	5.60												
J56	2883250.2253	9606983.1091	2.72												
J57	2883252.0353	9606985.1436	18.17												
J58	2883270.2036	9606984.8741	7.92												
J59	2883274.6494	9606991.4273	13.26												
J60	2883280.6416	9607003.2524	15.51												
J61	2883286.9220	9607017.4339	9.65												
J62	2883290.1164	9607026.5403	4.02												
J63	2883291.7632	9607030.2080	4.07												
J64	2883293.3616	9607033.9596	2.08												
J65	2883293.8098	9607035.9900	8.23												
J66	2883298.2029	9607042.9443	11.50												
J67	2883309.5871	9607041.2827	13.24												
J68	2883322.7380	9607042.8380	12.92												
J69	2883324.3994	9607048.3973	18.00												
J70	2883331.8123	9607052.9594	4.43												
J71	2883354.0842	9607069.6169	2.13												
J72	2883152.0802	9607070.3260	2.44												
J73	2883149.8428	9607071.2997	2.69												
J74	2883147.4947	9607072.6166	2.83												
J75	2883145.0155	9607073.9756	2.59												
J76	2883142.6674	9607075.0696	2.40												
J77	2883140.3801	9607075.7990	3.20												
J78	2883137.3771	9607076.9145	2.36												
J79	2883135.1302	9607077.6438	2.32												
J80	2883132.9937	9607078.5583	1.44												
J81	2883131.7589	9607079.3080	1.80												
J82	2883130.7671	9607080.3007	1.40												
J83	2883129.8764	9607081.8607	2.06												
J84	2883129.3299	9607083.8462	2.10												
J85	2883128.9774	9607085.9193	1.91												
J86	2883128.4916	9607087.7623	2.45												
J87	2883127.8034	9607090.1131	1.58												
J88	2883127.1556	9607091.5516	1.70												
J89	2883126.1637	9607092.9292	1.71												
J90	2883125.0302	9607094.2056	1.82												
J91	2883123.5446	9607095.2813	5.02												
J92	2883119.1432	9607097.6655	5.74												
J93	2883113.9445	9607100.1070	5.46												
J94	2883109.2596	9607102.9110	8.38												
J95	2883102.3414	9607107.6340	7.29												
J96	2883096.4243	9607103.3842	7.24												
J97	2883101.4007	9607098.1226	5.10												
J98	2883104.6184	9607094.1640	11.69												
J99	2883110.5723	9607094.1052	19.79												
J100	2883119.9733	9607066.6944	1.37												
J101	2883120.7045	9607065.5373	1.43												
J102	2883121.6313	9607064.4454	1.35												
J103	2883122.6389	9607063.5476	1.07												
J104	2883123.5189	9607062.9368	1.15												
J105	2883124.5328	9607062.3888	26.35												
J106	2883148.4006	9607051.2156	2.48												
J107	2883150.6872	9607050.2582	2.25												
J108	2883152.8288	9607049.5548	2.24												
J109	2883154.9969	9607049.0173	2.44												
J110	2883157.4079	9607048.6163	2.20												
J111	2883159.6027	9607048.4242	43.96												
J112	2883203.5065	9607046.2010	13.87												
J113	2883216.3913	9607041.0780	6.30												
J114	2883218.7190	9607046.9322	1.47												
J115	2883217.3536	9607047.4751	3.54												
J116	2883214.0676	9607048.7816	3.22												
J117	2883211.0789	9607049.9699	3.94												
J118	2883207.4222	9607051.4238	3.23												
J119	2883204.5441	9607052.8828	2.94												
J120	2883202.1253	9607054.5536	4.14												
J121	2883199.0056	9607057.2772	2.90												
J122	2883196.8477	9607058.2127	2.72												
J123	2883192.7169	9607060.8676	2.34												
J124	2883192.7169	9607062.1311	4.16												
J125	2883189.1578	9607064.2910	3.03												
J126	2883186.4674	9607065.6934	2.19												
J127	2883184.3631	9607066.3139	3.81												
J128	2883180.8191	9607067.0004	6.49												
J129	2883174.3600	9607067.6297	4.13												
J130	2883170.2445	9607067.9158	4.85												
J131	2883165.4089	9607068.2995	2.88												
J132	2883162.5355	9607068.4615	3.51												
J133	2883159.0336	9607068.6844	2.36												
J134	2883156.6954	9607068.9888	2.69												
J135	2883154.0842	9607069.6169	2.13												

地块2界址点坐标表				地块2界址点坐标表				地块2界址点坐标表				地块2界址点坐标表			
点号	X	Y	距离	点号	X	Y	距离	点号	X	Y	距离	点号	X	Y	距离
J71	2883154.0842	9607069.6169	2.13												
J72	2883152.0802	9607070.3260	2.44												
J73	2883149.8428	9607071.2997	2.69												
J74	2883147.4947	9607072.6166	2.83												
J75	2883145.0155	9607073.9756	2.59												
J76	2883142.6674	9607075.0696	2.40												
J77	2883140.3801	9607075.7990	3.20												
J78	2883137.3771	9607076.9145	2.36												
J79	2883135.1302	9607077.6438	2.32												
J80	2883132.9937	9607078.5583	1.44												
J81	2883131.7589	9607079.3080	1.80												
J82	2883130.7671	9607080.3007	1.40												
J83	2883129.8764	9607081.8607	2.06												
J84	2883129.3299	9607083.8462	2.10												
J85	2883128.9774	9607085.9193	1.91												
J86	2883128.4916	9607087.7623	2.45												
J87	2883127.8034	9607090.1131	1.58												
J88	2883127.1556	9607091.5516	1.70												
J89	2883126.1637	9607092.9292	1.71												
J90	2883125.0302	9607094.2056	1.82												
J91	2883123.5446	9607095.2813	5.02												
J92	2883119.1432	9607097.6655	5.74												
J93	2883113.9445	9607100.1070	5.46												
J94	2883109.2596	9607102.9110	8.38												
J95	2883102.3414	9607107.6340	7.29												
J96	2883096.4243	9607103.3842	7.24												
J97	2883101.4007	9607098.1226	5.10												
J98	2883104.6184	9607094.1640	11.69												
J99	2883110.5723	9607094.1052	19.79												
J100	2883119.9733	9607066.6944	1.37												
J101	2883120.7045	9607065.5373	1.43												
J102	2883121.6313	9607064.4454	1.35												
J103	2883122.6389	9607063.5476	1.07												
J104	2883123.5189	9607062.9368	1.15												
J105	2883124.5328	9607062.3888	26.35												
J106	2883148.4006	9607051.2156	2.48												
J107	2883150.6872	9607050.2582	2.25												
J108	2883152.8288	9607049.5548	2.24												
J109	2883154.9969	9607049.0173	2.44												
J110	2883157.4079	9607048.6163	2.20												
J111	2883159.6027	9607048.4242	43.96												
J112	2883203.5065	9607046.2010	13.87												
J113	2883216.3913	9607041.0780	6.30												
J114	2883218.7190	9607046.9322	1.47												
J115	2883217.3536	9607047.4751	3.54												
J116	2883214.0676	9607048.7816	3.22												
J117	2883211.0789	9607049.9699	3.94												
J118	2883207.4222	9607051.4238	3.23												
J119	2883204.5441	9607052.8828	2.94												
J120	2883202.1253	9607054.5536	4.14												
J121	2883199.0056	9607057.2772	2.90												
J122	2883196.8477	9607058.2127	2.72												
J123	2883192.7169	9607060.8676	2.34												
J124	2883192.7169	9607062.1311	4.16												
J125	2883189.1578	9607064.2910	3.03												
J126	2883186.4674	9607065.6934	2.19												
J127	2883184.3631	9607066.3139	3.81												
J128	2883180.8191	9607067.0004	6.49												
J129	2883174.3600	9607067.6297	4.13												
J130	2883170.2445	9607067.9158	4.85												
J131	2883165.4089	9607068.2995	2.88												
J132	2883162.5355	9607068.4615	3.51												
J133	2883159.0336	9607068.6844	2.36												
J134	2883156.6954	9607068.9888	2.69												
J135	2883154.0842	9607069.6169	2.13												

2882.9 2882.9  
39606.8 39607.2

福建省尤溪县环宇工程技术咨询有限公司