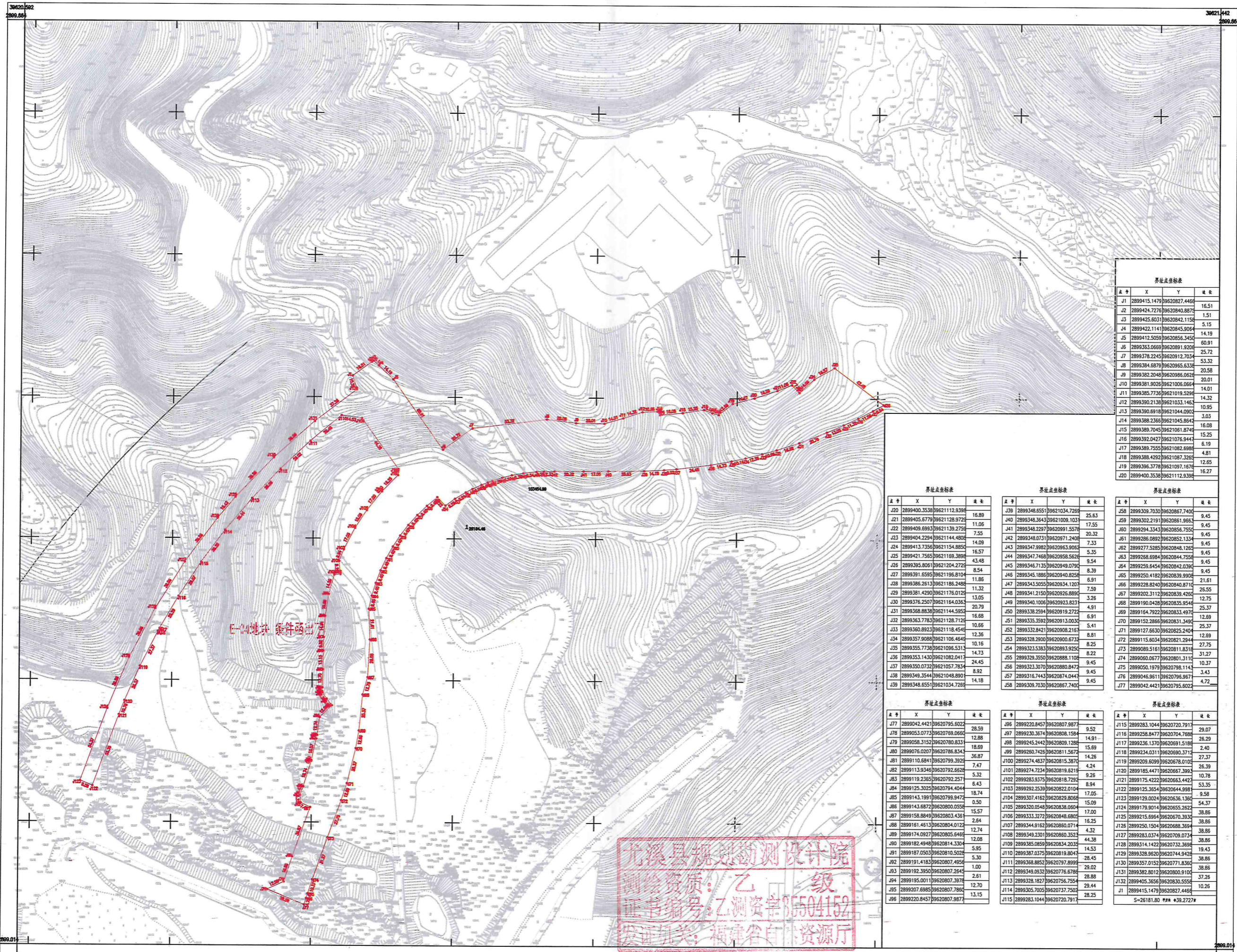


三益新城康泰路延伸线、边竹路延伸线、网中大道延伸线等建设项目(一期)用地勘测测量图
2899.0-39620.6



界址点坐标表			
点号	X	Y	备注
J1	2899415.1479	39620827.4468	16.51
J2	2899424.7276	39620840.8872	1.51
J3	2899425.6031	39620842.1156	5.15
J4	2899422.1141	39620845.9064	14.19
J5	2899412.5059	39620856.3450	60.91
J6	2899383.0669	39620891.9200	25.72
J7	2899378.2245	39620912.7034	53.32
J8	2899384.6879	39620985.6330	20.58
J9	2899382.2048	39620986.0620	20.01
J10	2899381.9026	39621006.0660	14.01
J11	2899385.7736	39621019.5299	14.32
J12	2899390.2138	39621033.1460	10.95
J13	2899390.6918	39621044.0902	3.03
J14	2899388.2366	39621045.8642	16.08
J15	2899389.7045	39621061.8740	15.25
J16	2899392.0427	39621076.9444	6.19
J17	2899389.7555	39621082.6988	4.81
J18	2899388.4292	39621087.3260	12.65
J19	2899396.3778	39621097.1670	16.27
J20	2899400.3538	39621112.9398	

界址点坐标表			
点号	X	Y	备注
J21	2899405.6779	39621128.9728	11.06
J22	2899409.6883	39621139.2758	7.55
J23	2899404.2284	39621144.4808	14.09
J24	2899413.7356	39621154.8850	16.57
J25	2899421.7565	39621169.3898	43.48
J26	2899395.8061	39621204.2722	8.54
J27	2899391.6595	39621196.8104	11.86
J28	2899386.2813	39621186.2488	11.32
J29	2899381.4290	39621176.0728	13.05
J30	2899376.2507	39621164.0362	20.79
J31	2899368.8838	39621144.5852	16.68
J32	2899363.7783	39621128.7128	10.66
J33	2899360.8923	39621118.4548	12.36
J34	2899357.9088	39621106.4648	10.16
J35	2899355.7738	39621096.5312	14.73
J36	2899353.1430	39621082.0412	24.45
J37	2899350.0732	39621057.7834	8.92
J38	2899349.3544	39621048.8890	14.18
J39	2899348.6551	39621034.7288	

界址点坐标表			
点号	X	Y	备注
J40	2899348.3643	39621008.1032	25.63
J41	2899348.2287	39620991.5578	17.55
J42	2899348.0731	39620971.2408	20.32
J43	2899347.9982	39620963.9062	7.33
J44	2899347.7468	39620958.5626	5.35
J45	2899346.7135	39620949.0790	9.54
J46	2899345.1888	39620940.8258	8.39
J47	2899343.5055	39620934.1207	6.91
J48	2899341.2150	39620926.8890	7.59
J49	2899340.1006	39620923.8232	3.28
J50	2899338.2594	39620919.2722	4.91
J51	2899335.3592	39620913.0030	6.91
J52	2899332.8421	39620908.2167	5.41
J53	2899328.2900	39620900.6732	8.81
J54	2899323.3383	39620893.9250	8.25
J55	2899329.3550	39620888.1108	8.22
J56	2899323.3070	39620880.8472	9.45
J57	2899318.7443	39620874.0442	9.45
J58	2899309.7030	39620867.7400	

界址点坐标表			
点号	X	Y	备注
J59	2899302.2191	39620861.9666	9.45
J60	2899294.3343	39620856.7550	9.45
J61	2899286.0882	39620852.1334	9.45
J62	2899277.5285	39620848.1262	9.45
J63	2899268.6984	39620844.7558	9.45
J64	2899259.6454	39620842.0390	9.45
J65	2899250.4182	39620839.9900	
J66	2899228.8240	39620840.8710	21.61
J67	2899202.3112	39620839.4260	26.55
J68	2899190.0428	39620835.9546	12.75
J69	2899164.7922	39620833.4970	25.37
J70	2899152.2866	39620831.3490	12.69
J71	2899127.6630	39620825.2404	27.75
J72	2899115.6034	39620821.2824	12.69
J73	2899089.5161	39620811.8318	31.27
J74	2899060.0677	39620801.3110	10.37
J75	2899050.1979	39620798.1143	3.43
J76	2899046.9611	39620796.9672	4.72
J77	2899042.4421	39620795.6022	

界址点坐标表			
点号	X	Y	备注
J77	2899042.4421	39620795.6022	28.59
J78	2899053.0773	39620788.0660	12.88
J79	2899058.3152	39620780.8333	18.69
J80	2899076.0207	39620786.8344	36.87
J81	2899110.6841	39620799.3929	7.47
J82	2899113.9346	39620792.6626	5.32
J83	2899119.2385	39620792.2577	6.43
J84	2899125.3025	39620794.4044	18.74
J85	2899143.1991	39620799.9472	0.50
J86	2899143.6872	39620800.0558	15.57
J87	2899158.8849	39620803.4360	2.64
J88	2899174.0927	39620804.0122	12.74
J89	2899182.4948	39620814.3304	12.08
J90	2899187.0503	39620810.5028	5.95
J91	2899191.4183	39620807.4956	5.30
J92	2899192.3950	39620807.2845	1.00
J93	2899195.0011	39620807.3978	2.61
J94	2899207.6985	39620807.7880	12.70
J95	2899220.8457	39620807.9877	13.15

界址点坐标表			
点号	X	Y	备注
J96	2899220.8457	39620807.9877	9.52
J97	2899220.3674	39620808.1584	14.91
J98	2899245.2442	39620809.1288	15.69
J99	2899280.7426	39620811.5672	14.26
J100	2899274.4837	39620815.3870	7.47
J101	2899274.7234	39620819.6219	9.26
J102	2899283.9375	39620818.7290	8.94
J103	2899292.2339	39620822.0104	17.05
J104	2899307.4162	39620829.8068	15.09
J105	2899320.0548	39620838.0604	17.00
J106	2899333.3272	39620848.6805	16.25
J107	2899344.9162	39620860.0711	4.32
J108	2899349.2301	39620860.3552	44.38
J109	2899385.0859	39620834.2032	14.53
J110	2899387.0375	39620819.8047	28.45
J111	2899388.8852	39620797.8999	29.02
J112	2899349.0932	39620776.6788	28.88
J113	2899328.1827	39620756.7554	29.44
J114	2899305.7005	39620737.7502	28.25
J115	2899283.1044	39620720.7917	

界址点坐标表			
点号	X	Y	备注
J115	2899283.1044	39620720.7917	29.07
J116	2899258.8477	39620704.6888	28.29
J117	2899236.1370	39620691.3188	2.40
J118	2899234.0311	39620690.3712	27.37
J119	2899209.6099	39620678.0705	4.24
J120	2899185.4471	39620667.3993	10.78
J121	2899175.4222	39620663.4442	53.35
J122	2899125.3654	39620644.9981	9.58
J123	2899129.0024	39620636.1360	54.37
J124	2899179.9014	39620655.2622	38.86
J125	2899215.6964	39620670.3030	38.86
J126	2899250.1504	39620688.3694	38.86
J127	2899283.0374	39620709.0734	38.86
J128	2899314.1422	39620732.3698	19.43
J129	2899328.9620	39620744.9428	38.86
J130	2899357.0152	39620771.8360	38.86
J131	2899382.8012	39620803.0000	37.26
J132	2899405.3656	39620830.5558	10.26
J1	2899415.1479	39620827.4468	

尤溪县规划勘测设计院
测绘资质：乙 级
证书编号：乙测资字35504152
发证机关：福建省自然资源厅